

**Legend**

1 DUAC	8 DUAC	11 DUAC	VILLAGE CENTER	CC1	GOLF COMM.	LDR1	MF	OPF	PF	SF7
1-3 DUAC	6 DUAC	18 DUAC	TOURIST COMM.	EDR	HDR	LDR2	MHR	OP	PI	LMDR 14
2 DUAC	7 DUAC	5-15 AC/DV	GENERAL COMM.	ENTRY-LEVEL RES. 9-7 DUAC	HR	LDR3	MINI-STORAGE/RY	OPCI	SCHOOL	TC/SC
3 DUAC	9 DUAC	ARTERIAL COMM.	ACCESS CORRIDOR	EXECUTIVE RES. 3-7 DUAC	I	LMDR	MIXED USE	OS	SCHOOL/50 LOTS	100
5-7 DUAC	10 DUAC	COMMUNITY COMM.	BUSINESS PARK	CC(C)	LDR	LMR	MR	OSRURAL RESERVE	SCHOOL/PARK	TRUCKEE RIVER
4 DUAC	12 DUAC	NEIGHBORHOOD COMM.	CI	CCADR	LDR/MDR	MDR	MWS	PARK	SFE	VNS

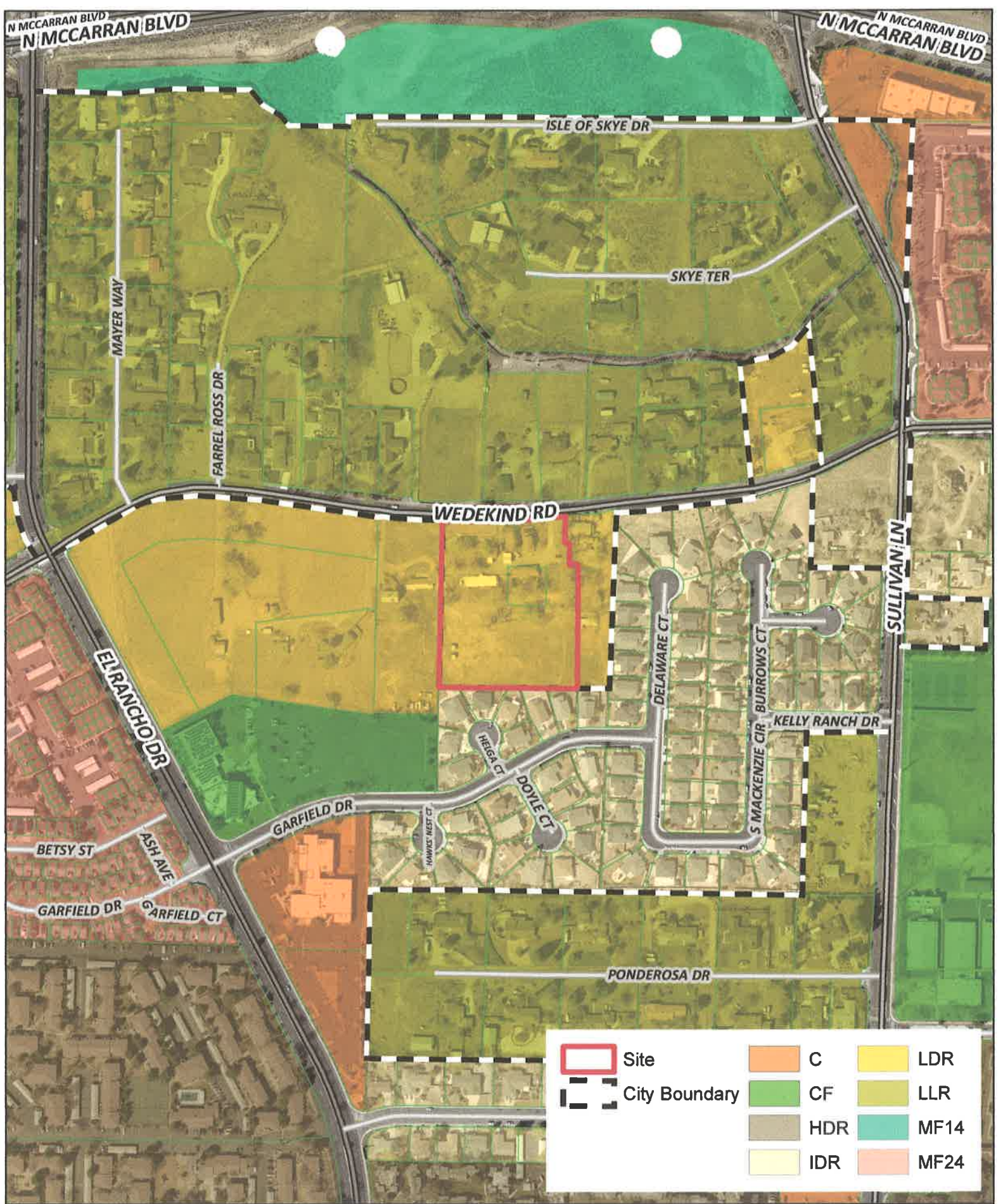
PCN17-0024

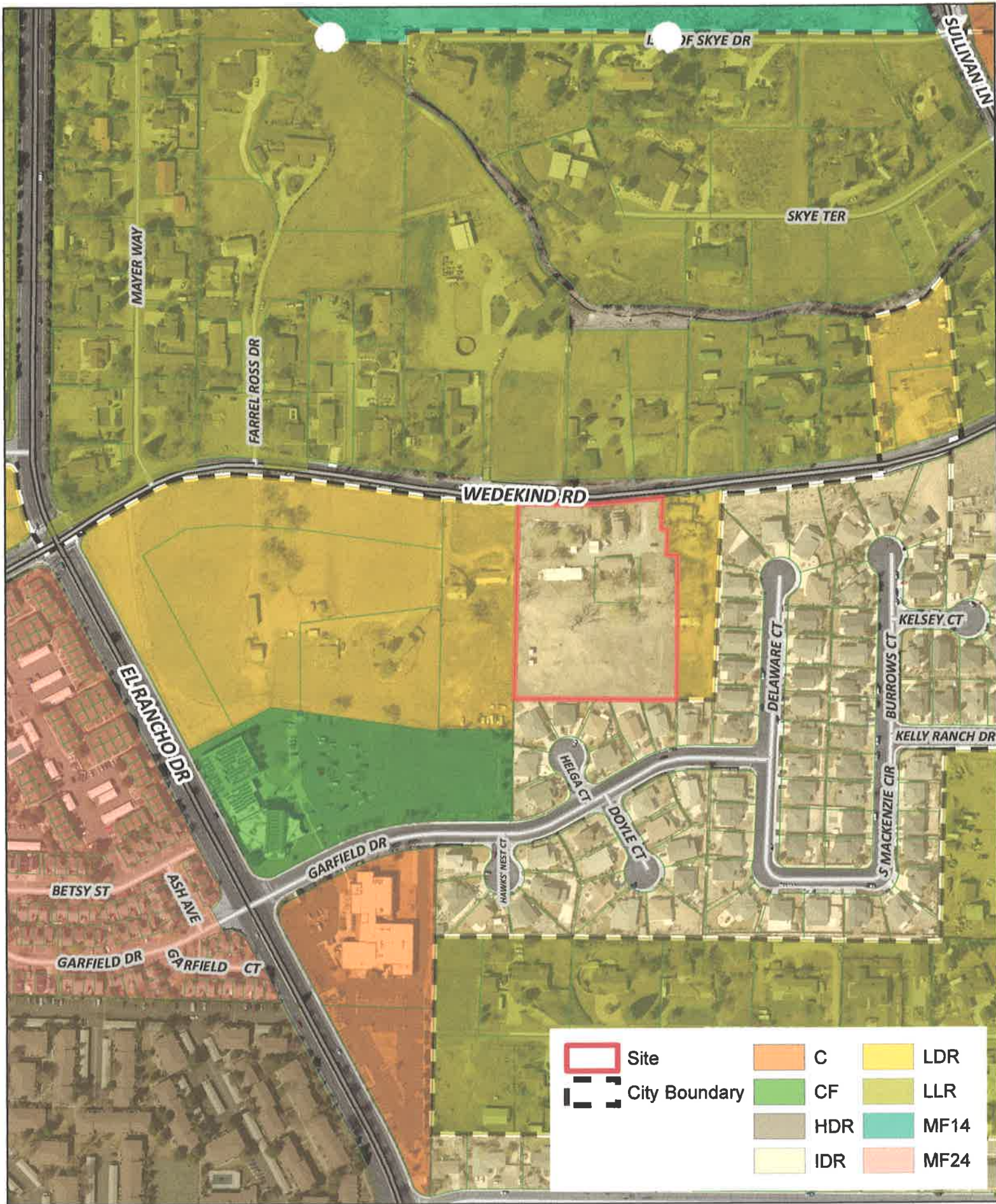
Exhibit B








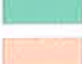




# Master Plan (Old) Land Use







	Site		C		LDR
	City Boundary		CF		LLR
			HDR		MF14
			IDR		MF24

**PCN17-0024**  
**Comprehensive Plan Amendment**  
**Proposed Land Use**

Exhibit D

